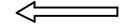


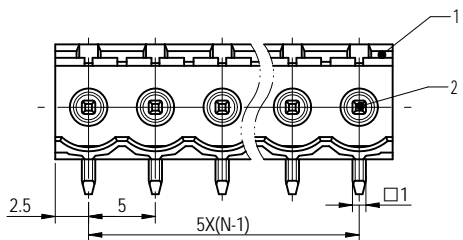
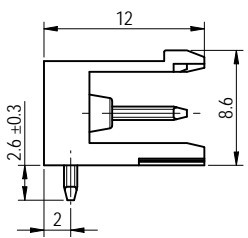
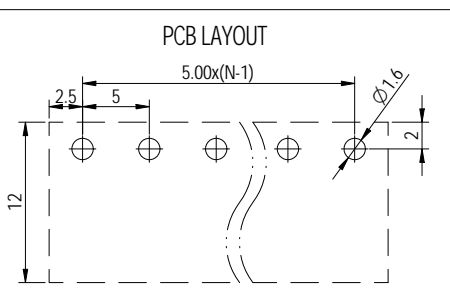
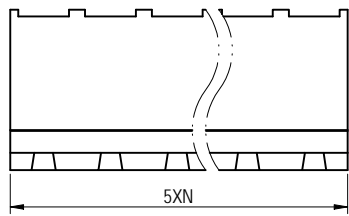
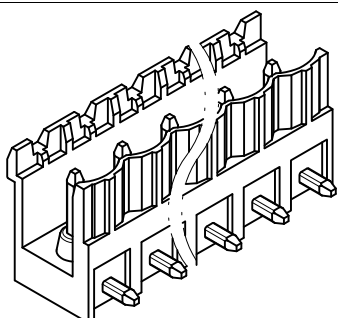
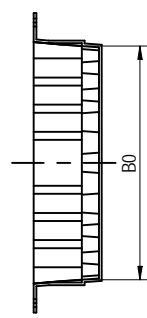
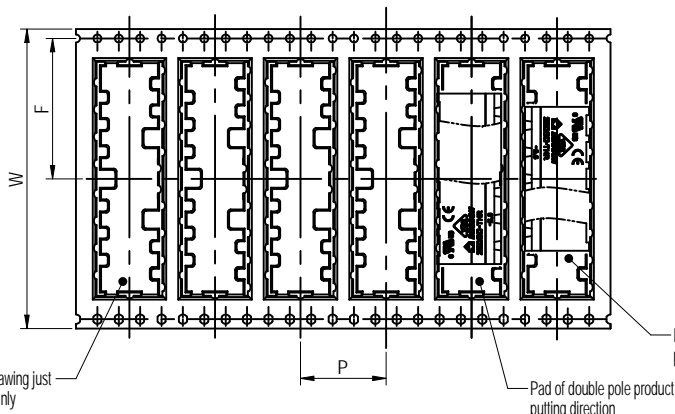
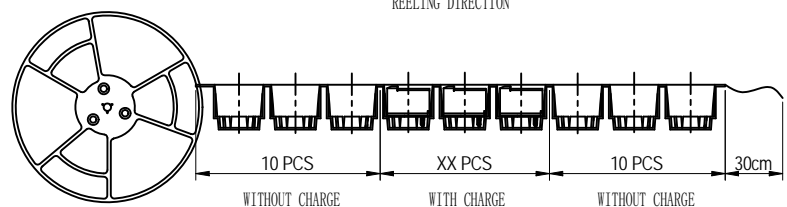
Reel Name	POLE	Width/W	Pitch/P	Width/F	Width/Bo	Qty. pre reel	Reel qty. per carton	Qty. per carton
2EDGRM-THR-5.08-REEL (32)	2-3	32mm	16mm	14.25mm	20.62mm	330	8	2640
2EDGRM-THR-5.08-REEL (56)	4-8	56mm	16mm	26.25mm	43.72mm	330	5	1650
2EDGRM-THR-5.08-REEL (88)	9-12	88mm	16mm	42.25mm	71.42mm	240	3	720

公差/General tolerances (mm)											D			
0	>3	>6	>10	>18	>30	>50	>80	>120	>180	>250	>315	>400	>500	0.1/10
~3	~6	~10	~18	~30	~50	~80	~120	~180	~250	~315	~400	~500	±2	
±0.12	±0.18	±0.22	±0.26	±0.31	±0.37	±0.57	±0.80	±0.93	±1.05	±1.15	±1.60	±2.20	±2.50	

SCALE: 1:1



REELING DIRECTION



Note:
The A&Z(H) in the name means: A(H) and Z(H).

ITEM	NAME OF PART	MATERIAL	NOTES
2	Pin	Copper	Sn Plated
1	Housing	Thermoplastic	UL94V-0

UL 标准/UL Standard:	B	C	D
额定电压/电流/Rated Voltage(V)/Current(A)	300/15	/	300/10
IEC 标准/IEC Standard:			
过压类别/Overvoltage Category/污染等级/Pollution Degree	III/3	II/2	II/2
额定电压/电流/Rated Voltage(V)/Current(A)	/	320/20	/
额定脉冲电压(KV)/Rate Impulse Voltage(KV)	/	4	/
间距/Pitch(mm)/线数范围/Poles	5.0/N=02~12P		
使用温度范围/Operating temperature(°C)	-40~+130		
符合RoHS环保要求/Conform to RoHS	Yes		
标准颜色编号/Standard color number: PANTONE / RAL	/		

DIAGON	MATERIAL:	SURFACE/COLOR:
APPD: 兰春华	MAT NO./REV: - / 00	MAT STATUS: 批量
CHKD: 黄耀志	NAME: 2EDGR-THR-5.0-XXP-1Y-00A&Z(H)	
DRFT: 方哲盛	DRAWING NO. 200019772	TYPE CUSTOMER DRAWING

REV	ECN	DESCRIPTION	DRFT	DATE	SCALE	SHEET
00			方哲盛	2023.02.16	2:1	1/1

Transfer or duplication of this document as well as the utilization of its contents without the written permission of the copyright holder is prohibited. All rights reserved for patent.