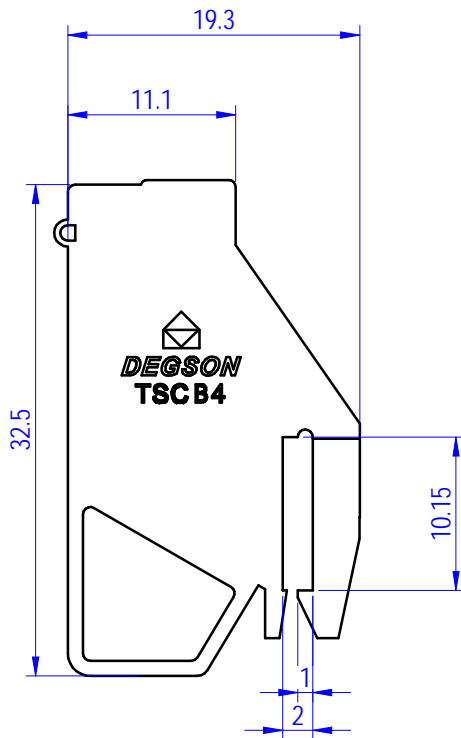
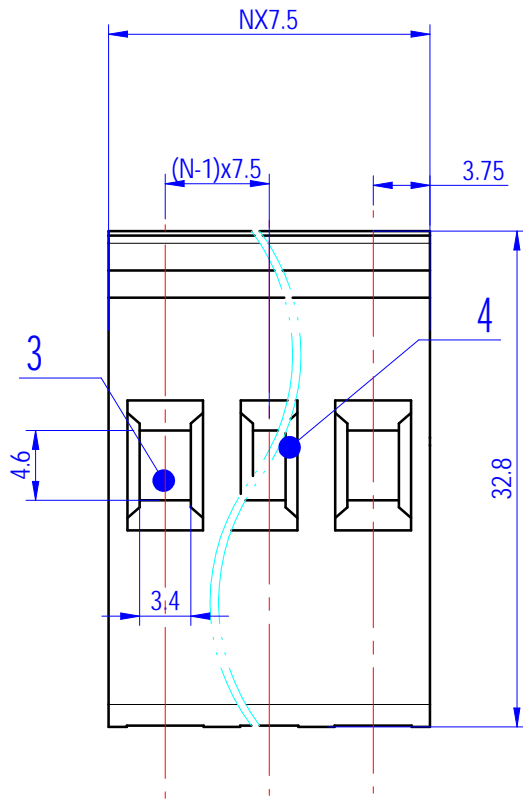
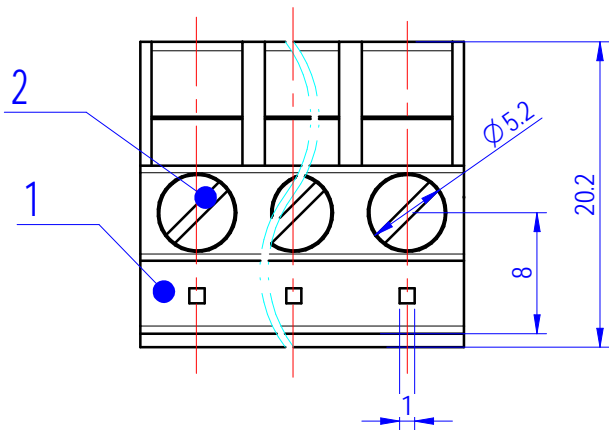
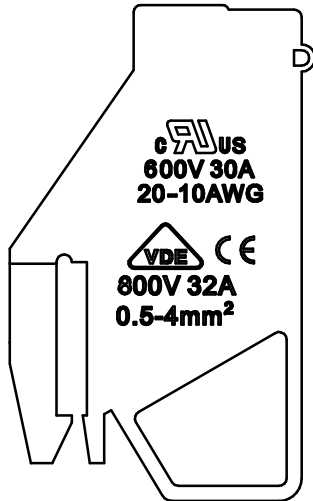


Transfer or duplication of this document, as well as the utilization or communication of its contents, are prohibited unless explicit authorization is granted. Violations will be liable for compensation. All rights reserved for patent, utility model or design registrations. 除经书面明确授权, 否则禁止转让、复制、利用、交流本文件的内容。未经书面明确授权, 复制、利用、交流本文件的内容, 均属于侵权行为。侵权者应承担法律责任。 所有权利保留, 专利、实用新型和外观设计均受法律保护。



未注公差/General tolerances(mm)											0.1/10		
0	>3	>6	>10	>18	>30	>50	>80	>120	>180	>250		>315	>400
-3	~6	~10	~18	~30	~50	~80	~120	~180	~250	~315	~400	~500	>500
±0.12	±0.18	±0.22	±0.26	±0.31	±0.37	±0.57	±0.80	±0.93	±1.05	±1.15	±1.60	±2.20	±2.50

ITEM	NAME OF PART	MATERIAL	NOTES
4	Pin Header	Copper	Sn Plated
3	Cage	Copper alloy	M3/Ni Plated
2	Screw	Copper alloy	M3/Ni Plated
1	Housing	PA66	UL94 V-0

UL 标准/UL Standard:	B	C	D
额定电压/电流/Rated Voltage(V)/Current(A)	600/30	600/30	600/5
IEC 标准/IEC Standard:			
额定电压/电流/Rated Voltage(V)/Current(A)	800/32		
工频耐压 (KV/1min) Withstanding voltage	AC2500V/1Min		
螺丝扭矩/Torque Tightening(N·m/Lb.in)	M3, 0.5/4.4		
线径范围(硬线和软线)/Wire Range(rigid and flexible)(AWG/mm²)	20~10 / 0.5~4		
间距/Pitch(mm)/线数范围/Poles	7.50/N=01~03P		
剥线长度/Stripping length(mm)	10~12		
使用温度范围/Operating temperature(°C)	-40~+105		
符合 RoHS 环保要求/Conform to RoHS	Yes		
标准颜色编号/Standard color number: PANTONE	157U		

		MATERIAL:	SURFACE/COLOR:	
APPD: 蓝贵凡	2025.02.10	MAT NO./REV:	MAT STATUS: 批量	
CHKD: 汪德荣	2025.02.10	NAME: TSCB4-XXP-15-500Z (H)		
DRFT: 包新棉	2025.02.10	DRAWING NO. 200306224	TYPE: CUSTOMER DRAWING	DRAWING STATUS: 已发布
REV	ECN	DESCRIPTION	SCALE: 2:1	SHEET: 1/1

REV	ECN	DESCRIPTION	DRFT	DATE
00			包新棉	2025.02.10

