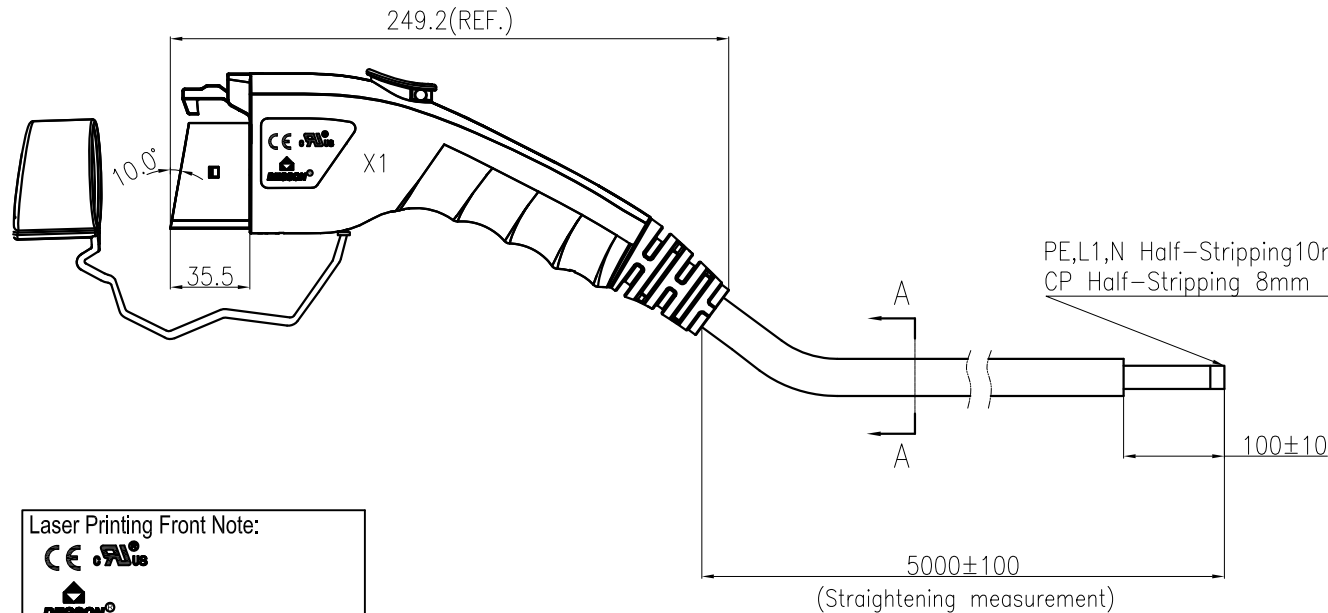
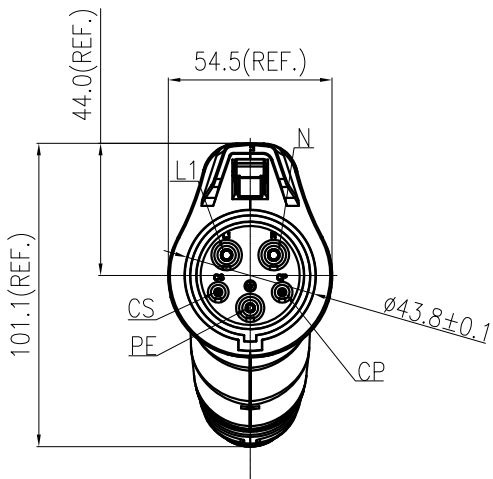
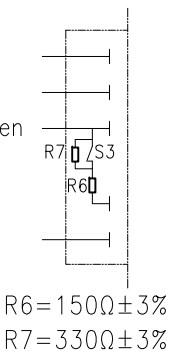


公差/General tolerances(mm)											0.1/10 ±2'		
0	>3	>6	>10	>18	>30	>50	>80	>120	>180	>250		>315	>400
±0.12	±0.18	±0.22	±0.26	±0.31	±0.37	±0.57	±0.80	±0.93	±1.05	±1.15	±1.60	±2.20	±2.50



Wiring diagram

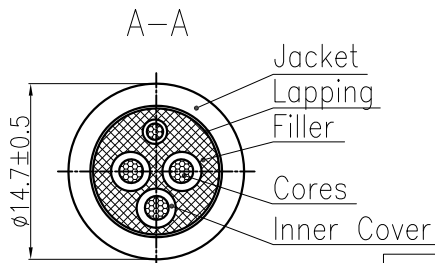
- L1 12AWG Brown
- N 12AWG Blue
- PE 12AWG Yellow/Green
- CS
- CP 18AWG Red



X1

**Laser Printing Front Note:**

**Laser Printing Back Note(Arial):**  
 MAAC-S-016A-V-03-5.0M-86AH  
 16A 240V AC  
 SAE J1772:2017  
 Type 3R  
 20xxxxxx-xxxx



额定电压/Rated voltage/Current	240V AC/16A
绝缘电阻/Insulation resistance	>100MΩ, 500V DC 1min
耐压/Withstanding voltage	L, N and PE ,2500V AC 1min L and N ,2500V AC 1min
防护等级/Ingress protection	Type 3R
插拔寿命/Insertion/Pullout times	10,000 Times
插拔力/Insertion/Pullout force	<75N
使用温度范围/Operating temperature(°C)	-30~+50
线材规格/Cable specification	3*12AWG+1*18AWG Black
标准/Reference standard	SAE J1772:2017
符合RoHS环保要求/Conform to RoHS	Yes

		MATERIAL:	SURFACE/COLOR:
		MAT NO/REV: DO-1	MAT STATUS:
APPD: Ye DB 2024.09.18	CHKD: Dong RT 2024.09.18	NAME MAAC-S-016A-V-03-5.0M-86A(H)	
DRFT: Hu MY 2024.09.18		DRAWING NO.	TYPE CUSTOMER DRAWING
REV	ECN	DESCRIPTION	DRFT
DATE	SCALE 1:3	DRAWING STATUS	SHEET 1/1

Transfer or duplication of this document as well as the utilization or communication of its contents are prohibited unless authorized in writing. All rights reserved for patent, copyright, trademark, or other intellectual property rights. 复制或传播本文件内容, 未经书面许可, 是严格禁止的。本公司保留所有权利。